

Le loto de l'espace



LUNE



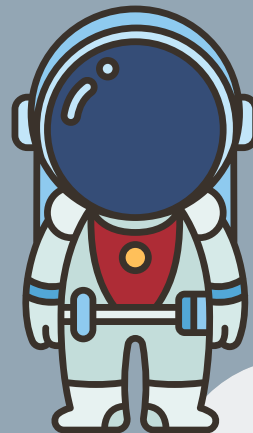
SOLEIL



TERRE



FUSÉE



ASTRONAUTE



ÉTOILE



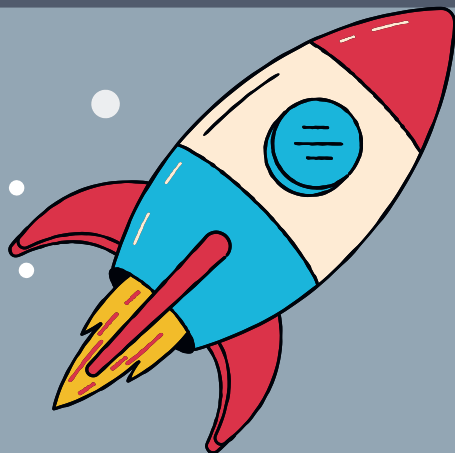
LUNE



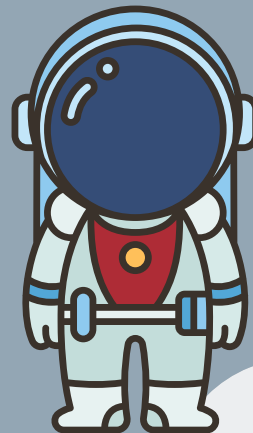
SOLEIL



TERRE



FUSÉE



ASTRONAUTE



ÉTOILE



LUNE

SOLEIL

TERRE

FUSÉE

ASTRONAUTE

ÉTOILE



The image consists of a 2x3 grid of six square panels, each with a dark blue background and white stars. The panels are separated by dark blue borders. The words are written in a stylized font with red and blue colors. The background of each panel features abstract, light blue and white shapes that resemble clouds or celestial bodies.

lune

soleil

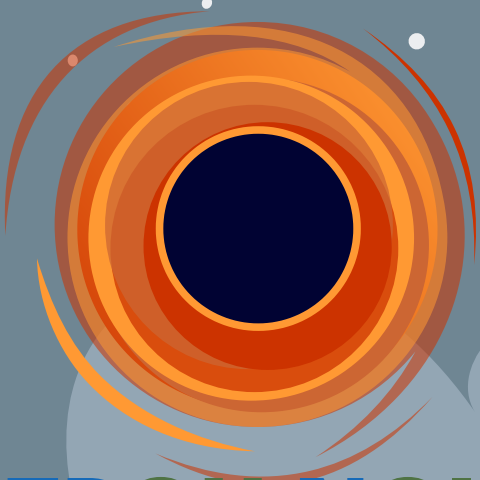
terre

fusée

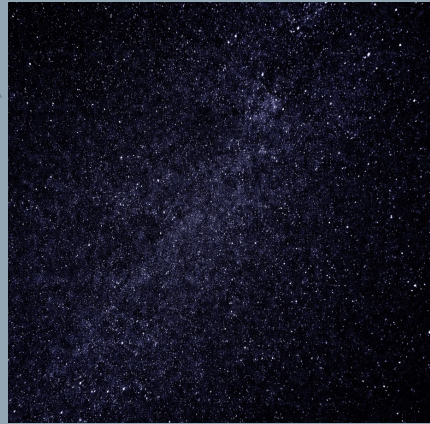
astronaute

étoile

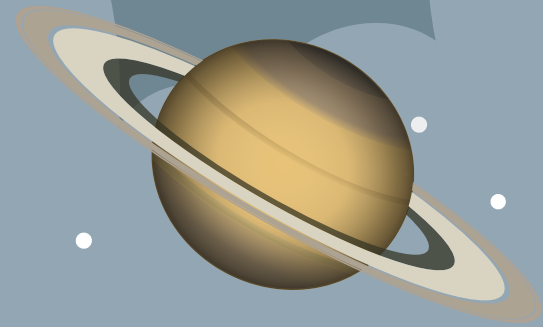
Le loto de l'espace



TROU NOIR



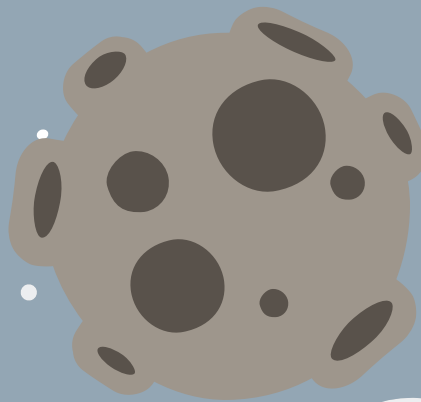
GALAXIE



SATURNE



MARS



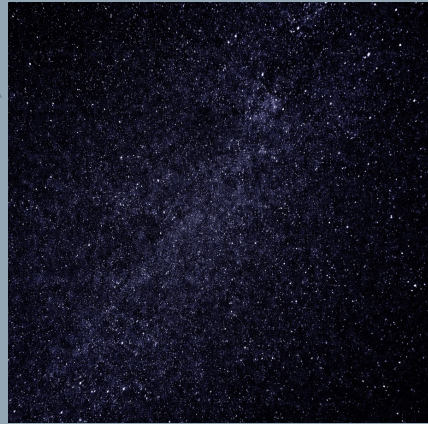
ASTEROIDE



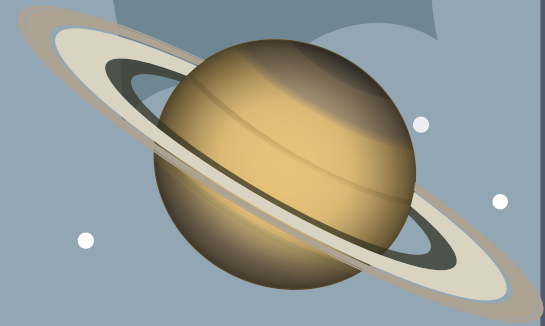
COMETE



TROU NOIR



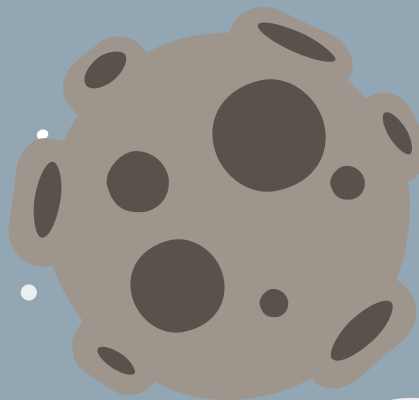
GALAXIE



SATURNE



MARS



ASTEROIDE



COMETE



TROU NOIR

GALAXIE

SATURNE

MARS

ASTEROIDE

COMETE



trou noir

galaxie

saturne

mars

asteroide

comete